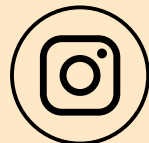




# ALL DAY MENU

8:00am-9:00pm



@kakaakocafe



www.kakaakocafe.com



725 Kapiolani Blvd  
Honolulu, HI 96813  
(808) 492-1470

## SANDWICHES

BACON EGG CHEESE	\$13.50
EGG WHITE PESTO	\$12.50
CHICKEN SALAD	\$13.50
CURRY CHICKEN	\$13.50
HOT PASTRAMI	\$14.75
CLUB	\$14.75
CLASSIC SALMON	\$16.25
ROAST BEEF	\$15.50
TUNA MELT	\$15.50
BAGEL BURGER	\$15.50
FISH SANDWICH	\$15.25



## SALADS

### KAKAAKO SALAD \$12.50

mixed green, red onion, tomato, avocado, craisins, almond, house dressing

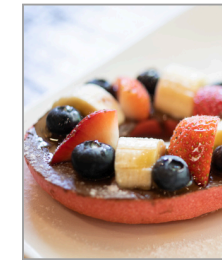
#### TOPPING

BACON	\$2.00
GRILLED CHICKEN	\$4.00
CHICKEN SALAD	\$4.00
CURRY CHICKEN	\$4.00
BOILED EGG	\$1.50
SALMON	\$5.00
TUNA	\$4.50



## DESSERT

ACAI BOWL	\$13.25
BAGEL w/ FRUIT	\$8.00
FRUIT CROSSANT	\$8.00
CHOCOLATE BANANA CROSSANT	\$8.00
SCONE OF THE DAY	\$3.50



## SMALL MEAL

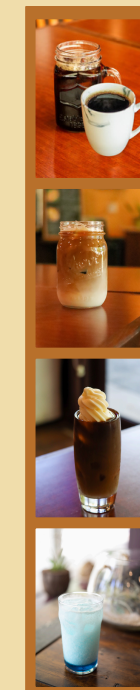
HAM & CHEESE CROISSANT	\$6.25
BAGEL PIZZA	
• CHEESE PIZZA	\$5.75
• 3 TOPPING PIZZA	\$8.50

Toppings:

Pepperoni, Bacon, Ham, Spinach, Tomato, Onion, Mushroom

## DRINK SELECTION

	16oz	20oz
AMERICANO	\$4.50	\$5.00
LATTE	\$5.50	\$6.00
MOCHA	\$5.75	\$6.25
THAI COFFEE	\$5.75	\$6.25
CAPPUCINO	\$5.50	\$6.00
HOUSE COFFEE	\$4.25	\$4.75
ICE COFFEE	\$4.25	\$4.75
CHAI LATTE	\$5.00	\$5.50
MATCHA LATTE	\$5.00	\$5.50



## SOFT SERVE

DAIRY FREE

VANILLA

SWIRL

MONTHLY SPECIAL



KEIKI CONE \$4.25



CUP \$5.25



## HOMEMADE SOUP

### SOUP OF THE DAY

8 oz	\$4.75
16 oz	\$6.75



## MONTHLY SPECIAL

Come inside!!! Ask us and check out what we have for this month!!!

ESPRESSO	\$1.75
PLANTATION ICE TEA	\$5.25
LEMONADE	\$4.25
ARNOLD PALMER	\$4.00
ORANGE JUICE	\$4.00
APPLE JUICE	\$4.00
ITALIAN CREAM SODA	\$4.50
HOT TEA	\$4.25
ICE TEA	\$4.25
ROYAL MILK TEA	\$5.00
Additional Flavor	\$0.75